

Overview

The EMC1600 is a metal-cased chassis system, it can house up to sixteen stand-alone Media Converters and Ethernet Extenders.

Ideal Central Point

Includes two standard redundant power supplies and four cooling fans, the EMC1600 offers a securer and higher capacity housing for your network central point to contain and power up to 16 Media Converters and Ethernet Extenders.

Plug-and-Play

This chassis system is capable of hot-swap installation of Media Converters, Ethernet Extenders and redundant power supply.

Functionality

There is one cooling fan inside each redundant power supply. Two additional fans are fitted on the inside wall of the chassis to ensure good ventilation.



Features

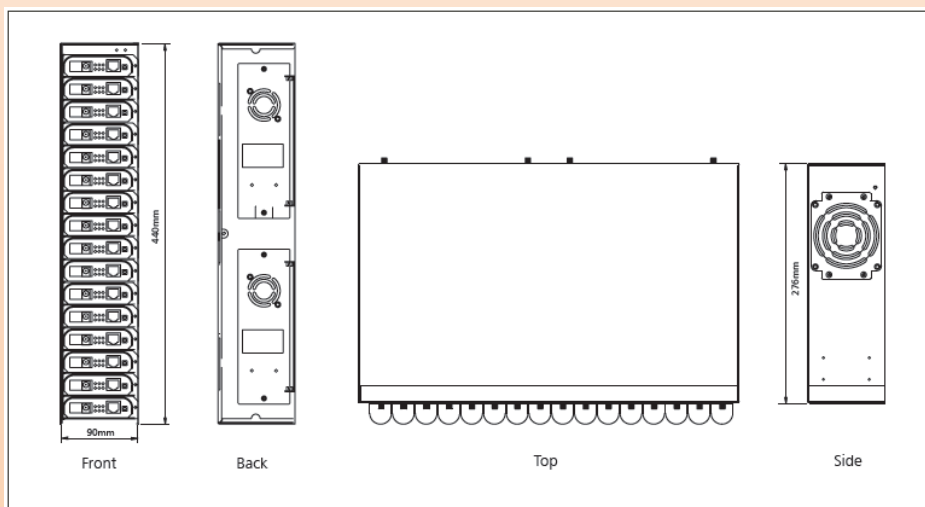
- House up to sixteen Media Converters (EM1100/EM2100, EM1000/EM2000, EM1000S/EM2000S, EM120, EL100/EL200, and EL110/EL210 series) and Ethernet Extenders (ED3101 and ED3331)
- Non-stop operation and minimal downtime
- Hot-swappable: Media Converters, Ethernet Extenders and redundant power supply modules
- Redundant 100 ~ 240VAC 50 ~ 60Hz Internal Universal PSU or 48VDC Power inputs
- Power redundancy: The other redundant power supply module is capable of taking over immediately if one of the power supply modules fails
- Load sharing: Two internal power supply modules provided for load sharing purposes
- Power isolation: Media Converter and Ethernet Extender bay power isolation ensures each bay is electrically isolated from each other
- Over current protection: Fuse on PCBA for each Media Converter and Ethernet Extender bay and power supply module
- 0°C to 45°C (32°F to 113°F) operating temperature range
- Metal case, standard 19" rack-mount size, two-unit-height
- Supports Rack Mounting installation

Ordering Information

EMC1600	16-Bay Media Converter and Ethernet Extender Chassis, includes 2 AC Power Supplies (EMC1600-RPSA)
EMC1600-RPSA	Redundant AC Power Supply (84W) for EMC1600
EMC1600-RPSA2	Redundant AC Power Supply (130W) for EMC1600
EMC1600-RPSD	Redundant DC 48V Power Supply for EMC1600

- * The optional Media Converter and Ethernet Extender series for EMC1600 are to be separately ordered by customers' choice
- * The following is the list of the Media Converter series: EM1100/EM2100, EM1000/EM2000, EM1000S/EM2000S, EM120, EL100/EL200 & EL110/EL210 series.
- * The following is the list of the Ethernet Extender series: ED3101 and ED3331

Diagrams



Specifications

Power

Input:

- 100 ~ 240VAC, 50 ~ 60Hz Internal Universal PSU
- 48VDC

Power Consumption:

- 73.2W Max.

Mechanical

Casing:

- Metal case

Dimensions:

- 440mm (W) x 276mm (D) x 90mm (H)
(17.32" (W) x 10.87" (D) x 3.54" (H))
- Standard 19" rack-mount size, two-unit-height

Weight:

- 6.8Kg (14.96lbs.)

Installation:

- Rack Mounting

Interface

- LED Indicators:
- Per Unit: Power Status (Power)

Environment

Operating Temperature:

- 0°C to 45°C (32°F to 113°F)

Storage Temperature:

- -10°C to 70°C (14°F to 158°F)

Ambient Relative Humidity:

- 5% to 90% (non-condensing)

Regulatory Approvals

ISO:

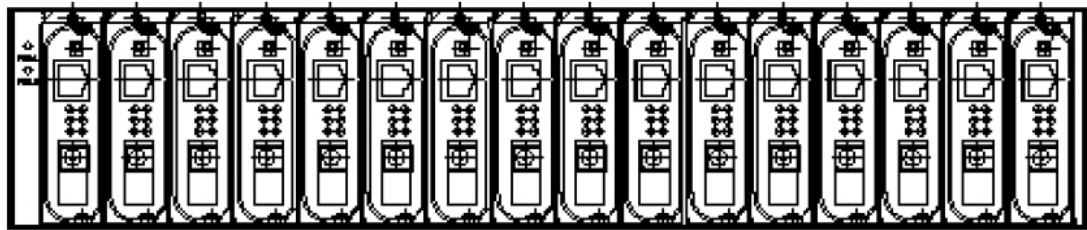
- Manufactured in an ISO9001 facility

Safety:

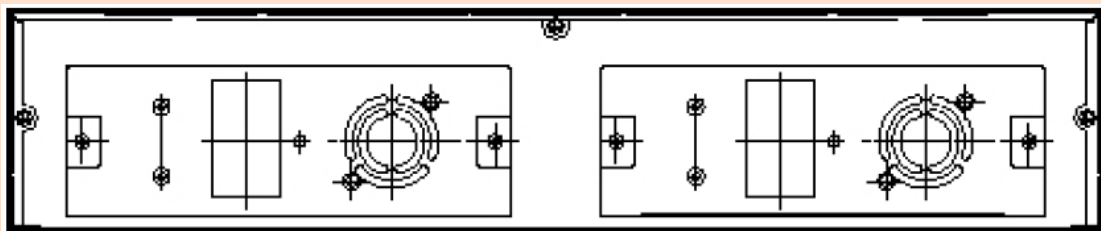
- UL60950-1

Emission Compliance:

- CE Mark Class A, FCC Part 15 Class A



EMC1600 Front Panel



EMC1600 Rear Panel

