

Overview



The managed Media Converter System can be monitored and configured through out-of-band management via a Web Browser. Each EMMC800M Managed Converter Chassis has eight slots to contain the EMM100CO media converters. Up to four EMMC800M Chassis may be stacked as one Managed Converter Chassis System using stacking ports on the Chassis. One EMM100W Managed Media Converter module is required in one Chassis for management. One EMM100W Media Converter Module will manage a four stack Chassis with up to 64 Media Converters (32 Local and 32 Remote).

Features

- Each EMMC800M Managed Converter Chassis provides Eight media converter slots
- Up to four EMMC800M chassis may be stacked
- 0°C to 45°C (32°F to 113°F) operating temperature range
- Metal case, standard 19" rack-mount, one-unit-height
- Hot-swappable in any slot when used with EMM100W Media Converter Chassis Manager or EMM100CO Media Converter (CO)
- EMM100CP Media Converter (CPE) connects to the EMM100CO and EMM100W

Specifications

Power

Input:

- 100 ~ 240VAC, 50 ~ 60Hz Internal Universal PSU

Power Consumption:

- 32W Max. (with 1 EMM100W + 7 EMM100CO)

Mechanical

Casing:

- Metal case

Dimensions:

- 440mm (W) x 235mm (D) x 44mm (H)
(17.32" (W) x 9.25" (D) x 1.73" (H))
- Standard 19" rack-mount size, one-unit-height

Weight:

- 3Kg (6.6lbs.)

Installation:

- Rack Mounting

Interface

LED Indicators:

- Per Unit: Power Status (Power), Fan Status, Stack Port Status

Environment

Operating Temperature:

- 0°C to 45°C (32°F to 113°F)

Storage Temperature:

- -10°C to 70°C (14°F to 158°F)

Ambient Relative Humidity:

- 5% to 95% (non-condensing)

Regulatory Approvals:

ISO:

- Manufactured in an ISO9001 facility.

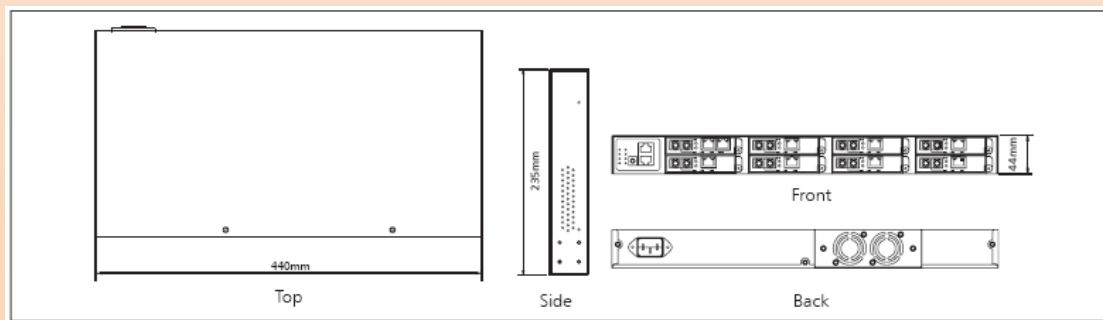
Safety:

- UL60950-1

Emission Compliance:

- CE Mark Class A, FCC Part 15 Class A

Diagrams



EMM100W

10/100BASE-TX to 100BASE-FX Media Converter and Chassis Manager

Features

- System Change - Device Name, New Password, Old Password, Version, MAC address
- IP Configuration - DHCP, IP address, Netmask, Default Gateway
- Chassis Hardware Monitor - Temperature, Supply Voltage Value, Fan Status, Active MC, Uptime
- CO MC Status - Operation Status, Link Status, Receive Count, Drop Count, Collision Count
- CO MC Control - Forwarding Mode, Remote Control, Link Fault Pass Through, Port Mode, Flow Control, MDIX, Output Rate, Input Rate, Informing Way for Receiving Off
- CPE MC Auto Report
- CPE MC Status - Status of power, Status of receiving optical Power, Terminal link status, MC status, informing way for Receiving off, Status of loopback test, Notification of link status for the terminal, Terminal link speed, Duplex for the terminal, Capability of auto-negotiation for the terminal, Number of interface in Terminal
- CPE MC Control - Forwarding Mode, Remote Control, Link Fault Pass Through, Port Mode, Flow Control, MDIX, Output Rate, Input Rate, Informing Way for Receiving Off
- Loopback Test
- MC Hardware Monitor - Temperature, Supply Voltage
- SNMP Configuration - System Contact, System Location, Get Community, Set Community

- Alarm - Alarm Configuration, Hardware Alarm Configuration, Alarm Mail-Trap, Alarm SNMP-Trap
- TFTP Client for Software Upgrade
- Telnet, SNMP V1 & V2, Web Browser, and TFTP Management Enterprise MIB
- 128K bits buffer memory
- Built-in CPU with 2M Bytes Flash & 8M Bytes SDRAM
- 10/100Mbps-Full/Half-duplex, Auto-Negotiation, Auto-MDI/MDIX
- Full wire-speed forwarding rate
- 0°C to 45°C (32°F to 113°F) operating temperature range
- Aluminium case
- Supports expansion when used with EMMC800M Managed Media Converter Chassis
- Hot-swappable in any slot when used with EMMC800M Managed Media Converter Chassis



Specifications

Technology

Standards:

- IEEE802.3 10BASE-T, IEEE802.3u 100BASE-TX/100BASE-FX, IEEE802.3x

Protocols:

- SNMP V1/V2, TFTP RFC 783, IP RFC 791, ICMP RFC 792, TCP RFC 793, SMTP RFC 821, Telnet RFC 854, HTTP RFC 2068

Forward and Filtering Rate:

- 14,880pps for 10Mbps
- 148,810pps for 100Mbps

Packet Buffer Memory:

- 128K bits
- Built-in CPU with 2M Bytes Flash & 8M Bytes SDRAM

Processing Type:

- Store-and-Forward
- Half-duplex back-pressure and IEEE802.3x full-duplex flow control

Power

Input:

- Input Voltage: 12VDC

Power Consumption:

- 4.2W Max. 0.35A@12VDC

Mechanical

Casing:

- Aluminium case

Dimensions:

- 80mm (W) x 124mm (D) x 20mm (H)
(3.15" (W) x 4.88" (D) x 0.79" (H))

Weight:

- 160g (0.35lb.)

Installation:

- Expansion use with EMMC800M Managed Media Converter Chassis

Interface

Ethernet Port:

- 10/100BASE-TX: 1 port
- 100BASE-FX: 1 port

Console Port:

- Port: One RJ45 Ethernet port

LED Indicators:

- Per Unit: Power Status (Power, Failure Alarm)
- Per Port: 10/100TX: Link/Activity, Full-duplex/Collision
100FX: Link/Activity
- Console: Activity, Full-duplex/Collision

Environment

Operating Temperature:

- 0°C to 45°C (32°F to 113°F)

Storage Temperature:

- -10°C to 70°C (14°F to 158°F)

Ambient Relative Humidity:

- 5% to 95% (non-condensing)

Regulatory Approvals:

ISO:

- Manufactured in an ISO9001 facility.

Emission Compliance:

- CE Mark Class A, FCC Part 15 Class A

Chassis number is configured using a front panel switch.



EMM100CO

10/100BASE-TX to 100BASE-FX Media Converter (CO)

Features

- 128K bits buffer memory
- 10/100Mbps-Full/Half-duplex, Auto-Negotiation, Auto-MDI/MDIX
- Full wire-speed forwarding rate
- 0°C to 45°C (32°F to 113°F) operating temperature range
- Aluminium case
- Supports expansion when used with EMMC800M Managed Media Converter Chassis
- Hot-swappable in any slot when used with EMMC800M Managed Media Converter Chassis



Specifications

Technology

Standards:

- IEEE802.3 10BASE-T, IEEE802.3u 100BASE-TX/100BASE-FX, IEEE802.3x

Forward and Filtering Rate:

- 14,880pps for 10Mbps
- 148,810pps for 100Mbps

Packet Buffer Memory:

- 128K bits

Processing Type:

- Store-and-Forward
- Half-duplex back-pressure and IEEE802.3x full-duplex flow control

Power

Input:

- Input Voltage: 12VDC

Power Consumption:

- 3W Max. 0.25A@12VDC

Mechanical

Casing:

- Aluminium case

Dimensions:

- 80mm (W) x 124mm (D) x 20mm (H)
(3.15" (W) x 4.88" (D) x 0.79" (H))

Weight:

- 160g (0.35lb.)

Installation:

- Installed in the EMMC800M Managed Media Converter Chassis

Interface

LED Indicators:

- Per Unit: Power Status (Power, Failure Alarm)
- Per Port: 10/100TX: Link/Activity, Full-duplex/Collision
100FX: Link/Activity

Environment

Operating Temperature:

- 0°C to 45°C (32°F to 113°F)

Storage Temperature:

- -10°C to 70°C (14°F to 158°F)

Ambient Relative Humidity:

- 5% to 95% (non-condensing)

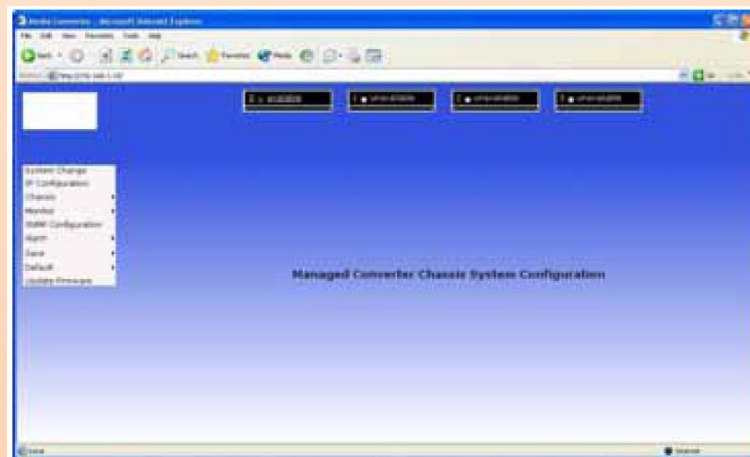
Regulatory Approvals:

ISO:

- Manufactured in an ISO9001 facility.

Emission Compliance:

- CE Mark Class A, FCC Part 15 Class A



EMM100CP

10/100BASE-TX to 100BASE-FX Media Converter (CPE)

Features

- 128K bits buffer memory
- 10/100Mbps-Full/Half-duplex, Auto-Negotiation, Auto-MDI/MDIX
- Full wire-speed forwarding rate
- 0°C to 45°C (32°F to 113°F) operating temperature range
- Aluminium case
- Supports desktop installation



Specifications

Standards:

IEEE802.3 10BASE-T, IEEE802.3u 100BASE-TX/100BASE-FX, IEEE802.3x

Forward and Filtering Rate:

14,880pps for 10Mbps
148,810pps for 100Mbps

Packet Buffer Memory:

128K bits

Processing Type:

Store-and-Forward

Half-duplex back-pressure and IEEE802.3x full-duplex flow control

Power

Input:

Input Voltage: 12VDC

Power Consumption:

3W Max. 0.25A@12VDC

Mechanical

Casing:

- Aluminium case

Dimensions:

- 80mm (W) x 124mm (D) x 20mm (H)
(3.15" (W) x 4.88" (D) x 0.79" (H))

Weight:

- 160g (0.35lb.)

Installation:

- Desktop

Interface

LED Indicators:

- Per Unit: Power Status (Power, Failure Alarm)
- Per Port: 10/100TX: Link/Activity, Full-duplex/Collision
100FX: Link/Activity

Environment

Operating Temperature:

- 0°C to 45°C (32°F to 113°F)

Storage Temperature:

- -10°C to 70°C (14°F to 158°F)

Ambient Relative Humidity:

- 5% to 95% (non-condensing)

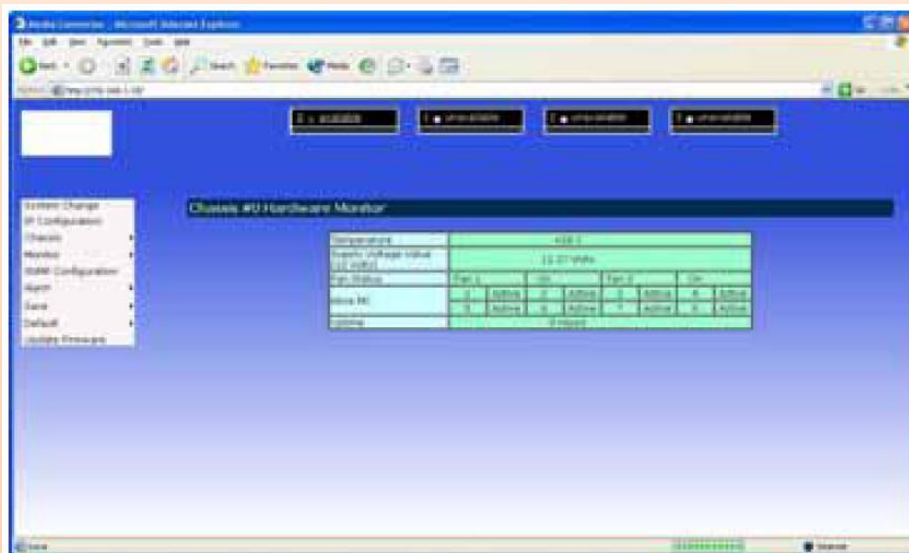
Regulatory Approvals:

ISO:

- Manufactured in an ISO9001 facility.

Emission Compliance:

- CE Mark Class A, FCC Part 15 Class A



Ordering Information

8-Bay Managed Media Converter Chassis

EMMC800M	8-Bay Managed Media Converter Chassis
----------	---------------------------------------

EMM100W Media Converter Chassis Manager

EMM100WC	10/100BASE-TX to 100BASE-FX Multi Mode (SC)
EMM100WT	10/100BASE-TX to 100BASE-FX Multi Mode (ST)
EMM100WC-20	10/100BASE-TX to 100BASE-FX Single Mode (SC) -20Km
EMM100WC-40	10/100BASE-TX to 100BASE-FX Single Mode (SC) -40Km
EMM100WC-75	10/100BASE-TX to 100BASE-FX Single Mode (SC) -75Km
EMM100WT-20	10/100BASE-TX to 100BASE-FX Single Mode (ST) -20Km
EMM100WCA-20	10/100BASE-TX to 100BASE-BX Single Mode (SC) WDM -TX:1310nm/RX:1550nm -20Km
EMM100WCB-20	10/100BASE-TX to 100BASE-BX Single Mode (SC) WDM -TX:1550nm/RX:1310nm -20Km
EMM100WCA-40	10/100BASE-TX to 100BASE-BX Single Mode (SC) WDM -TX:1310nm/RX:1550nm -40Km
EMM100WCB-40	10/100BASE-TX to 100BASE-BX Single Mode (SC) WDM -TX:1550nm/RX:1310nm -40Km

EMM100CO Media Converter (CO)

EMM100COC	10/100BASE-TX to 100BASE-FX Multi Mode (SC)
EMM100COT	10/100BASE-TX to 100BASE-FX Multi Mode (ST)
EMM100COC-20	10/100BASE-TX to 100BASE-FX Single Mode (SC) -20Km
EMM100COC-40	10/100BASE-TX to 100BASE-FX Single Mode (SC) -40Km
EMM100COC-75	10/100BASE-TX to 100BASE-FX Single Mode (SC) -75Km
EMM100COT-20	10/100BASE-TX to 100BASE-FX Single Mode (ST) -20Km
EMM100COCA-20	10/100BASE-TX to 100BASE-BX Single Mode (SC) WDM -TX:1310nm/RX:1550nm -20Km
EMM100COCB-20	10/100BASE-TX to 100BASE-BX Single Mode (SC) WDM -TX:1550nm/RX:1310nm -20Km
EMM100COCA-40	10/100BASE-TX to 100BASE-BX Single Mode (SC) WDM -TX:1310nm/RX:1550nm -40Km
EMM100COCB-40	10/100BASE-TX to 100BASE-BX Single Mode (SC) WDM -TX:1550nm/RX:1310nm -40Km

EMM100CP Media Converter (CPE)

EMM100CPC	10/100BASE-TX to 100BASE-FX Multi Mode (SC)
EMM100CPT	10/100BASE-TX to 100BASE-FX Multi Mode (ST)
EMM100CPC-20	10/100BASE-TX to 100BASE-FX Single Mode (SC) -20Km
EMM100CPC-40	10/100BASE-TX to 100BASE-FX Single Mode (SC) -40Km
EMM100CPC-75	10/100BASE-TX to 100BASE-FX Single Mode (SC) -75Km
EMM100CPT-20	10/100BASE-TX to 100BASE-FX Single Mode (ST) -20Km
EMM100PCPA-20	10/100BASE-TX to 100BASE-BX Single Mode (SC) WDM -TX:1310nm/RX:1550nm -20Km
EMM100PCPB-20	10/100BASE-TX to 100BASE-BX Single Mode (SC) WDM -TX:1550nm/RX:1310nm -20Km
EMM100PCPA-40	10/100BASE-TX to 100BASE-BX Single Mode (SC) WDM -TX:1310nm/RX:1550nm -40Km
EMM100PCPB-40	10/100BASE-TX to 100BASE-BX Single Mode (SC) WDM -TX:1550nm/RX:1310nm -40Km

